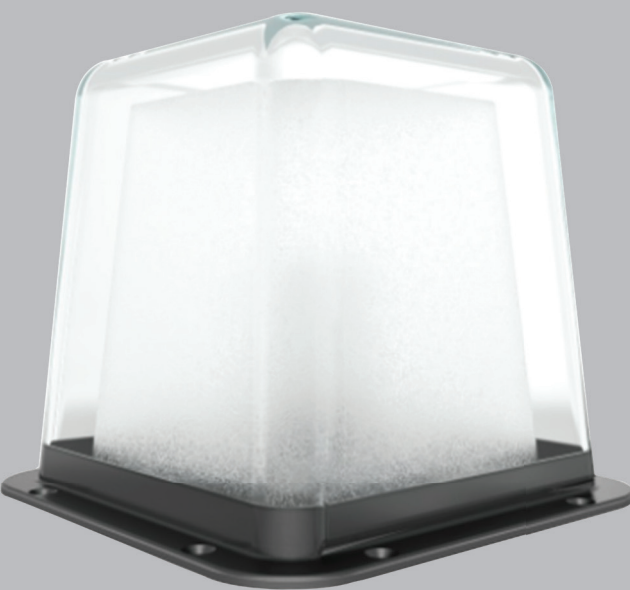


DIYA-S
BOLLARD

divinitylights



Quick Info

CRI ≥ 90

2700K, 3000K, 4000K

Non-Dimmable/ Dali-Dimmable

SDCM<3

Frosted Glass Diffuser

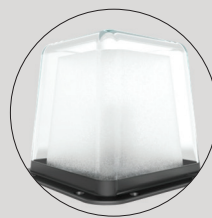
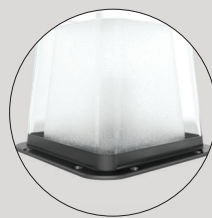
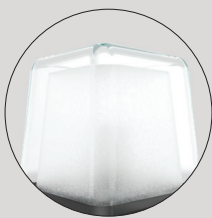
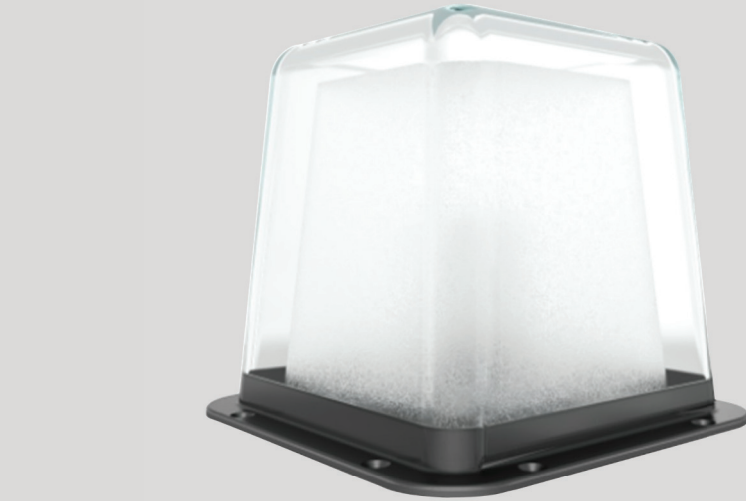
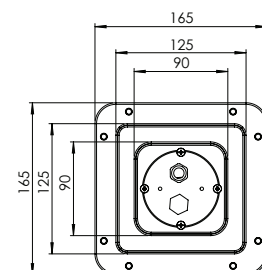
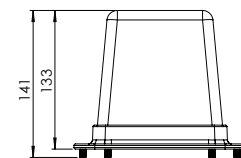
L70 @50,000h

Aluminium Die-Cast

Types

Surface

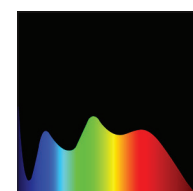
Single Line Diagram



DIYA-S BOLLARD

Diya-S Bollard fixture has :

- Luminaire housing of Aluminium
- IP66, High Ingress Protection against dust & moisture
- Flicker free operation for eye protection
- Energy-efficient LED with high colour rendering
- The built quality ensures long and maintenance free service life
- Optimum for every outdoor space including society parks, streets, educational institutes, and pathways
- Garden & pathway luminaires create pleasant light distribution with a high degree of visual comfort
- LED bollard, designed to provide radially symmetric light emission of 360°
- Sustainable LED technology offers durability and optimal light output with low power consumption



CRI ≥ 90

DIYA-S BOLLARD



Product Order Code	System Power	Dimensions
1881	5W	LXW=165mmX165mm H=141mm

Order Options

CCT (Colour Temperature)

- 2700K
- 3000K
- 4000K

CRI

>90

Beam Angle

N.A

Control

- Non-Dimmable
- Dali-Dimmable



Mounting Type

Surface

Material Colour

- Grey